

SUPPORTER NEWS Autumn 2020



Support for our Frontline Staff During COVID19

In a very short space of time the world around us looks quite different, and our thoughts are with those families that have been affected by COVID19. We are very grateful to all the **dedicated doctors, nurses, lab technicians, cooks, cleaners, laundry staff, social workers, chemists, orderlies, administrative and security staff** that have continued



Chief Medical Officer John Tait, delivers Easter Eggs to ICU staff on Easter Sunday

to provide essential services, care and treatment in our hospitals across the Greater Wellington Region at this time. Following numerous requests from people wanting to make donations to frontline staff facing additional and excessive strain as they juggle work and family commitments, we were very pleased to be able to establish a **Staff Welfare Fund**. If you would like to contribute, please go to: whf.org.nz/donate.

Easter Egg delivery for all essential staff

Thanks also to our friends at The Warehouse, Moore

Wilson's and Countdown Supermarkets, who helped us bring a little chocolate-cheer to essential staff working at Wellington Regional Hospital, Kenepuru and Hutt Hospitals over Easter, with the delivery of more than **5,000 Easter Eggs**. The sweet treats were handed out by CEO Fionnagh Dougan, Chief Nursing Officer Emma Hickson, General Manager Justine Plunkett and Chief Medical Officer Dr John Tait, giving them a chance to say thank you to all staff for their commitment and dedication during the COVID19 crisis. Thank you for your support of your healthcare workers during this extraordinary time.

New Children's Hospital Still on Track

While it's not quite business as usual, we are very fortunate that the Foundation team have been able to continue to work remotely, on your behalf, to enhance the hospital experience for patients and their families throughout all areas of Wellington Regional Hospital, Wellington Children's Hospital, Kenepuru Hospital, and Kapiti Health Centre.

Our biggest focus for the year is of course your New Children's Hospital. Whether it's your child, your grandchild, niece or nephew - **life changing illnesses or unexpected injuries can strike our loved ones at any time**. This brand new Children's Hospital will ensure that we can continue to provide the best possible care and treatment for those nearest and dearest to you for many years to come.

I really value the wonderful support that Mark has given us in establishing this modern, specially-designed children's hospital – a place where we will not only care for children who may be unwell, but through its expanded services, can help us support and connect more closely with our local communities, families and whānau. – **Fionnagh Dougan, CEO, CCDHB**

We are so lucky to have the most incredible, loyal and caring supporters and many organisations and individuals throughout our region, who have spent many hours preparing for fundraising events that have now been cancelled or postponed. The difficult reality is that our charity is going to feel the impact of this lack of fundraising income on your New Children's Hospital. But we remain optimistic.

After five weeks of lockdown we are pleased that construction work under Alert Level Three has resumed. Builders McKee Fehl have made some changes to how the site operates to ensure that all additional safety measures are in place, and it's fantastic to have this key project for the Greater Wellington Region underway again. While the team is working hard to make up for lost time, we anticipate a small delay in the completion of the project.

More than
87,100 Child
Health Visits last
year throughout
our region

PlayScape



Combines rehabilitative and therapeutic play features with medicinal and calming landscape planting

Once work on the exterior to close the building in has been completed, work on the interior will begin. During lockdown the project management and design teams continued to remotely progress the detailed designs for the interior and their procurement activities.

Weta Workshop have also been progressing their work for the new hospital to develop the creative environment and interactive spaces in the hospital. The creative environment of the new children's hospital is focused on children and their families and it will greatly enhance their well-being and experience of visiting and staying in hospital. Weta's ideas and concepts are magic and we can't wait to share it with you!



Work and consultation also continues around how we recognise Mark Dunajtschik and every other donor who has supported the new children's hospital, whether it's individuals, children gifting their pocket money, schools, small businesses or one of our corporate charity partners – **the wairua of this new children's hospital reflects the generosity, aroha and goodwill of our caring community.**

A closer look

It was a hive of activity when the Foundation team visited the site before lockdown. We've been fascinated to watch as, little by little, the blue wrap-around glazing has been installed on the exterior of new building. Each pane has been carefully lowered into position by a robotic spider-like device that slots it into a seismic, weather-tight frame.

An incredible **2.5 million** little Kiwi elements have been printed in a 'frit' design on the glazed panels. The tiny decorative fantails, koru, ferns, penguins, footballs and other iconic images will add a touch of fun for young patients to discover during their visit.



Bill Day & the WHF team with McKee Fehl's Project Managers Helen Moate and Bernie Pitt

**Stage Three of the build is your project!
Our community is raising the \$10 Million needed
to outfit and equip the interior of your New
Children's Hospital.**

Wow, the new hospital sounds amazing and will definitely help families. It's hard being stuck in hospital with your sick child. And right now most are sleeping on fold out chairs that are just metal poles and springs. Waking sore and tired doesn't help you stay positive for your child.

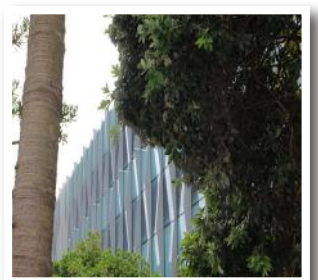
-Tina, parent

Another striking feature of the exterior that we are now able to appreciate, are the asymmetrical fins that run the vertical length of the building. Made of more than **1.4 kms** of aluminium, these fins give a unique and soft feathered effect to the building.

As a specialist tertiary level hospital we care for young people from a huge catchment area, including Whanganui to Napier, and all the way down to Nelson and Marlborough.

Your efforts and community funding will allow us to provide:

- the most up to date diagnostic, clinical, surgical and specialised paediatric equipment and medical spaces that we can afford,
- a warm, welcoming, family friendly environment, with a touch of Weta magic,
- all other resources and technologies that will ensure the new hospital is smart and future focused.



Meet Roxy from Masterton



Roxy, is a bright, bubbly and adventurous 10 year old. Diagnosed with Escobar Syndrome, she suffers multiple contractures of her joints and muscles which cause them to become stuck in a bent position making walking and every day childhood activities like riding a bike, almost impossible. Roxy has been a frequent flyer

to Wellington Regional Children's Hospital, having undergone many painful surgeries on her feet and knees, as well as several portacath surgeries and gastrostomies. Travelling from Masterton to Wellington each time has meant that the children's hospital has had to be their home away from home. Mum Nikki told us that, "Having a new children's hospital will mean more up to date facilities and modern furnishings which will make being in hospital a much more pleasant place to be." It's incredibly exciting - but we still need you! If you haven't already, please consider making a single gift or a regular contribution to help us raise the \$10 Million needed to outfit and equip the interior of your New Children's Hospital. These donations can be made online at www.whf.org.nz. Together we will ensure the best possible care for families around our region.



A Message from the Chair

OUR HOSPITAL STAFF - Amazing in the face of COVID19

What a great team of Health Care workers we have in Wellington and NZ. I can only say how proud the Foundation and I are of our wonderful hospital staff who stumped up and acquitted themselves so professionally as they nervously prepared for possible large numbers of COVID patients. Fortunately those large numbers did not materialise but the long hours, the time away from their families and the stress on staff cannot go unrecognised by all of us in the community. Heroes every one of them.

We have established a hospital staff welfare fund to provide for emotional assistance to our frontline health workers in areas that the DHB are unable to fund. Each case will be treated by the Foundation on a case by case basis and in strict privacy. If you are able to donate to our Welfare Fund please donate at www.whf.org.nz. Thank you so much.

NEW CHILDREN'S HOSPITAL - Back underway

It is so pleasing to have the recommencement of the building of our New Regional Children's Hospital. It is so good to see the McKee FEHL team back on site.

Our children are our future is a truism and the best of health care for every child becomes most important. Our wonderful donor Mr Mark Dunajtschik is also delighted that work has started again now NZ is at level 3 of the COVID19 pandemic.

The Foundation continues to raise the needed funds to equip and fit out the new hospital. You will read more about this in this newsletter. Please support our New Regional Children's Hospital Medical Equipment and Fit-Out appeal at www.whf.org.nz.

Thank you for your support and a hearty thank you to our doctors, nurses and staff who have put themselves first to help keep us all safe. We are not out of the woods yet so please stay safe, protect your families and loved ones while we overcome COVID19.

Kind regards



Bill Day, MNZM, JP
Chair
Wellington Hospitals Foundation

Thank you! Your support makes a huge difference to thousands of patients and their families every year

We are very pleased to share with you some of the equipment, environment enhancing resources and wonderful care items that your donations have made possible across our hospitals. Bill Day, Chair of the Foundation says, **“Your generosity, whether it’s as a regular or annual giver, as a corporate sponsor and charity partner, or as one of our amazing volunteers; is an enormous gift to our patients and their families.”**

Foundation Supporters provide a new Giraffe Incubator for the NICU



Ashleigh and Nick with their three boys just before leaving the NICU

Born more than three months early by emergency caesarean, Nick and Ashleigh's three gorgeous boys Jay, Finn and Kye spent a worrying three and half months in Wellington Regional Hospital's Neonatal Intensive Care Unit (NICU) before being strong enough to be allowed home.

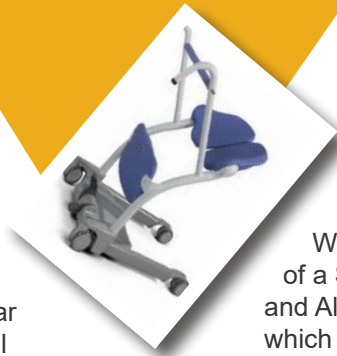
Premature babies can face a number of critical and life threatening challenges, including difficulty maintaining a stable body temperature, and the use of Giraffe Omnibed Carestations, or 'incubators' as we most commonly know them, are essential in the care of these littlest kiwis.

As a tertiary hospital, Wellington's NICU is one of the busiest in the country and last year more than **1,000 babies** from the Greater Wellington Region were cared for by their expert team. We were recently pleased to be able to buy, with Pub Charity's wonderful support, **another Giraffe Incubator** to help give precious babies like the Thompson Triplets, the best possible start in life.

Ashleigh told us that it was initially incredibly difficult to have limited contact with her babies when they were "incubating", but every day she saw them getting stronger and stronger. "The best thing was to finally see the boys strong enough to be out of their separate pods and all together again – it was the most emotional and special moment of my life when I was finally able to hold them all at once."

VPAP Machines for our Community Nursing Team

The Foundation was pleased to be able to fund two VPAP machines for our Community Nursing team to provide to families in need. VPAP machines are used to treat patients who require ventilator support, such as people who suffer from neuromuscular conditions, chest wall or other congenital abnormalities, as well as sleep apnoea.



Support for patients with mobility issues

Thanks to a generous donation from Mike & Kaye White, the Foundation has purchased a Shekel Chair Scale for Ward 5 North. The Chair Scale enables a patient with mobility or balance challenges to be weighed safely and accurately.

We were also very pleased to facilitate the purchase of a Sara Steady aid for the Older Adult, Rehabilitation and Allied Health Services Ward at Kenepuru Hospital, which was funded by a former patient. This equipment is essential for encouraging a patient to maintain mobility as well as assisting in sit-stand transfers. It is thanks to our wonderful supporters that additional equipment such as this can be purchased for areas where there is a real need.

New Heart Models for the Heart and Lung Unit



Nurse Educator Leanne Havill and Assoc Charge Nurse Manager Lorraine Brydges

A huge thanks to the Waipawa Lions Club for their generous donation to the Heart & Lung Unit at Wellington Regional Hospital. This donation has enabled the purchase of sought after heart models which will assist medical staff when explaining the treatment for coronary heart disease. The models include two classic heart models with arterial bypasses while the other two are life-sized diseased heart models with stents.

The Swan Family



Special gift for Wellington Children's Hospital

Thanks to a nomination from Graeme and Nicola Swan, we were very fortunate to receive a grant from the Hugo Charitable Trust, in memory of their precious son James, which enabled us to purchase a specialised Tomato Chair and various accessories. This chair is essential in the care of children aged 2-6 years who have limited movement due to either illness or a disability and who require additional support to sit safely to play or engage in rehabilitation therapies. The children's hospital is extremely grateful for this donation.

Models help families of children with clubfoot

Having a child with clubbed feet can be extremely distressing for parents. There may be several surgeries needed as well as many months of plaster casting to reposition the feet. We were pleased to be able to fund three sets of Ponseti and Tenotomy Models that will greatly assist our clinical staff in informing and supporting families through this difficult process.



Training models help families of children with clubbed feet.

Our Amazing Volunteers

We are thinking of all our wonderful volunteers at this difficult time and we hope you are back with us soon. Did you know that volunteers have been providing care and support to our hospitals' patients, families, visitors and staff for over **93 years!** The hospital volunteer service at Wellington Hospital was first established by the Ladies Auxiliary in 1928, and later in 1973 the famous Pink Ladies were also set up by nursing tutor Ella McLeod to help patients on the hospital wards with anything from refreshing water for flowers, reading newspapers or even buying cigarettes - which is totally unthinkable now! While many of our talented volunteer knitters, quilters and sewers continue to work on lovely-lockdown

projects for our hospitals in their bubble, our onsite teams of almost **120 guides, ICU receptionists, musicians, shop, sim suite and ED volunteers** have been temporarily suspended. We look forward to the not too distant future when we can safely resume our onsite volunteer services.



Carolyn Mills, Principal Harpist, NZSO

NZSO Principal Harpist joins our Volunteer Music Programme

We are extremely proud to have Carolyn Mills, Principal Harpist with the New Zealand Symphony Orchestra, join our volunteer Music Programme. Carolyn is a celebrated international performer and educator. Her music creates a

therapeutic and reflective sound cloud that fills our hospital atrium, and as with all our volunteer musicians, it greatly enhances the environment for patients, staff and visitors to the hospital.

Recognition for our Emergency Department Volunteer Team



Bill Day, Chair of the Foundation with our Emergency Department Volunteer team

For almost a decade, ED volunteers have provided practical support to clinical staff and patients by helping to create a positive and friendly environment. We were thrilled to have the team's dedication and hard work acknowledged as winners in their category of Volunteer of the Year late last year during the CCDHB Celebrating Our Success Awards.

42 Fabulous Years as a Hospital Volunteer Ruth Cooksley



Ruth with Bill Day, Kenepuru Volunteer Manager Trish Lee and other Hospital Volunteers at her Farewell Afternoon Tea in 2016

We were very sad to hear of the recent passing of Ruth Cooksley. Ruth began as a volunteer pink lady in 1974 shortly after Ella McLeod set up Wellington Hospital's famous Pink Lady service. Ruth was a wonderfully kind and gentle person who worked quietly at whatever task she was asked to do. Ruth reluctantly hung up her volunteer shirt in 2016 at the age of 93 after having given **42 wonderful years of service** to her community on a weekly basis.

Fantastic Fundraisers

We are so fortunate to have both individuals and teams of wonderful people in our community who have invested many hours planning charity dinners, auctions, book sales, raffles, quiz's and other fundraisers for the New Children's Hospital. Sadly many of these activities have been temporarily suspended. We hope that these activities are able to resume soon.

Jumbo Tennis

Jumbo Tennis is the sporting highlight of Wellington with a twist **OVERSIZE** rackets and table tennis rules!

We are extremely grateful to Wellington Rotary for organising such a fun day in support of the New Children's Hospital! This has become a real highlight of our fundraising calendar!



Ace 4 Kids - Dr Michelle Law and Nurse Specialist Charlotte Stanczuk represent the children's hospital

Children Caring for Children - Scots College New Children's Hospital TV Project



Nicolas Volpicelli-Muollo raises money for New Children's Hospital

for sick kids spending long hours in the children's hospital, is amazing.

Meet Nicolas Volpicelli-Muollo – a talented young man with a philanthropic outlook. What started as a Year 10 school Business Studies project, has turned into an amazing peer-to-peer fundraising initiative for the New Children's Hospital. Nicolas is working with other schools to raise money for 50 Smart TVs, which will be located in every child's room. Nicolas' concern and empathy

Thank you to all our Charity Partners and Major Sponsors

- Buddle Findlay Child Health Foundation
- Capital City Motors
- Child's Play Charity
- Countdown Kids Hospital Appeal
- Mark Dunajtschik and Dorothy Spotswood
- DLA Piper
- Four Winds Foundation
- Infinity Foundation
- Jack Jeffs Charitable Trust
- Lions International District 202M
- Lottery Grants Board
- Macaulay Metals
- Margaret Neave Charitable Trust
- Moore Wilson's
- Munro Bengé
- New Zealand Community Trust
- Noel Leeming
- One Foundation
- Pelorus Trust
- Perpetual Guardian
- Pub Charity Ltd
- Recycling For Charity
- R G Bell Charitable Trust
- Rotary District 9940
- The Lion Foundation
- The Southern Trust
- TG Macarthy Trust
- Trust House Foundation
- Wellington Community Trust
- Wellington Rugby Football Union
- Weta Workshop
- Winton & Margaret Bear Charitable Trust
- World Marudao Karate
- and all our supporters

How you can Help your Hospitals

- **Help our staff to help you.** Our hospital staff are our most important asset, and currently face additional challenges because of COVID19. Please support our Staff Welfare Fund by donating online at whf.org.nz/donate
- **Become a Well Wisher (Regular Giver)** for an area in your hospital that means something special to you. To find out more or sign up, email: donations@whf.org.nz
- **Make a one-off donation** online at whf.org.nz/donate
- **Leave a Bequest.** Make an important contribution in the future, without affecting your current circumstances. Email: admin@whf.org.nz to find out more.
- **Volunteer** at one of Wellington's Hospitals. For more information, visit whf.org.nz/volunteer, or email: volunteer@whf.org.nz
- **Hold a fundraiser** to raise money for an area in the hospital of your choice. Visit whf.org.nz/fundraise for ideas!
- **Become a Charity Partner** and collaborate with us in support of your hospitals. Email: admin@whf.org.nz to find out more.

Did you know that **you can claim a tax refund of up to 33%** for your donation? For more information or to make a claim, head to IRD's website: www.ird.govt.nz/income-tax-individual/

Connect with us:

- (04) 806 2332
- admin@whf.org.nz
- Private Bag 7902, Wellington 6242
- www.whf.org.nz
- Facebook [@wellingtonhospitalsfoundation](https://www.facebook.com/wellingtonhospitalsfoundation)
- Instagram [#Wellingtonhospitalsfoundation](https://www.instagram.com/Wellingtonhospitalsfoundation)

Hospi's helping paws

Hospi's continued to have fun visiting friends in the children's hospital and out and about – check out all those smiling faces! He looks forward to resuming visits once it is safe to do so.

