



Our New Wellington Regional Children's Hospital means **a brighter, healthier future for thousands of kiwi kids**

Our New Children's Hospital is one of the most significant capital investment projects for Child Health in Australasia for some time. With a staggering **87,000** health visits per year from kids who live across the Wellington region, this new hospital will be world-class, have improved clinical capacity and bring together multiple paediatric teams for a much more integrated child health service. This will mean a brighter, healthier future for thousands of kiwi kids.

***Ko koe te kaitiaki o te
hōhipera tamariki***
**You are the guardians of
the children's hospital.**

This final stage of the build is being funded because of your incredible support. The super-cool kids gifting their pocket money as well as many families, small kiwi businesses, community organisations and caring corporate

donors. **A HUGE THANKS to every one of you as we work towards raising the \$10 million needed** to outfit and equip the interior of the New Children's Hospital. But we still have a wee way to go.

The existing children's hospital has long been considered unfit for purpose. It has inadequate clinical and family spaces, insufficient isolation facilities and it also lacks some basic services such as air conditioning. Dr Andrew Marshall, Clinical Leader for the Child Health team knows first-hand how uncomfortable an overnight stay can be having spent time at his own children's bedsides 15 years ago and again 5 years ago. **"Unfortunately, not a lot has changed since then and staff are doing the best they can in a challenging environment. The new children's hospital will result in better clinical outcomes, as well as significantly enhancing the experience of the service for children, young people and their families."**

87,000 HEALTH VISITS PER YEAR

\$10 million
NEEDED TO OUTFIT & EQUIP INTERIOR



A New Regional Children's Hospital

"Designing a new Children's Hospital is an opportunity to design the future of Child Health services."

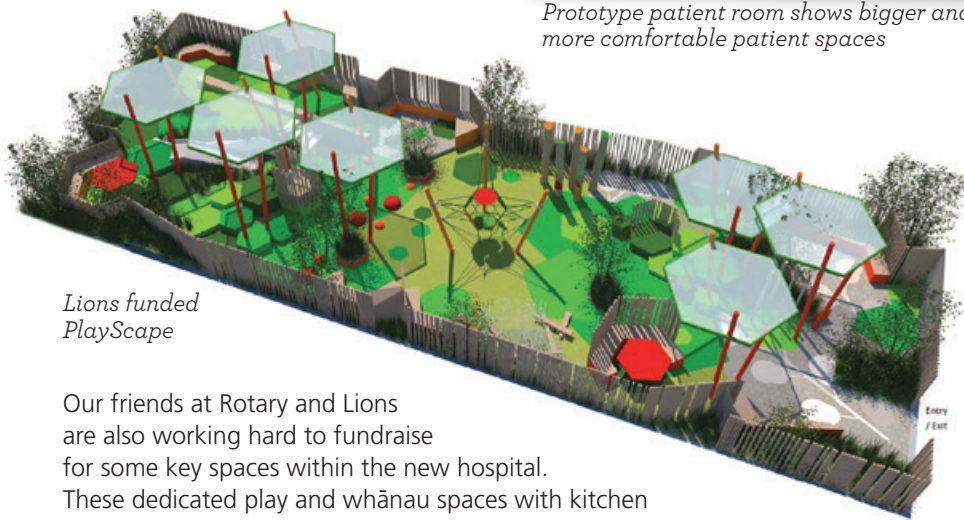
Dr John Tait, Chief Medical Officer,
CCDHB & Foundation Trustee



Fortunately modern healthcare is a world away from the Victorian practices of the original King Edward VII Memorial Children's Hospital when children were shut away in dormitory style wards. Young people and their families admitted to your new children's hospital will experience significantly improved comfort and privacy with single bedrooms, ensuite bathrooms, fold away adult beds and a personal Smart TV. Importantly, the change to individual patient rooms will also ensure greater infection control at a time when this has never been more important. Two prototype rooms are under construction, offering an exciting sneak peek into how the final spaces will look.



Prototype patient room shows bigger and more comfortable patient spaces



Lions funded PlayScape

Our friends at Rotary and Lions are also working hard to fundraise for some key spaces within the new hospital. These dedicated play and whānau spaces with kitchen and laundry facilities will also ensure a much better experience for families, especially those spending long periods of time in hospital during intensive periods of care and treatment with their sick children.



Artist's impression of one of the Rotary funded whānau spaces

6 child health outpatient services

are currently spread far and wide across the main hospital campus, and bringing these services under one roof will mean that they are much more easily accessed by families and will also allow for better collaboration across the different paediatric teams.

A key principle in the design feature of the new children's hospital is its child and family friendly focus. Having Weta Workshop on board will also ensure that all the creative, design and digital aspects of the hospital are woven together with a touch of wonder and magic!

Fortunately, work on your New Children's Hospital has continued as we cycle in and out of Covid Alert Levels and the project remains on track to open mid-next year. Initially the new building will be put through its paces with three months of transition testing from August 2021.

Transition testing is an essential part of the building process and enables staff to familiarise themselves with the new environment, consider operational flows as well as looking at issues of patient comfort and safety. **Simulation testing will cover all aspects of the hospital's medical, administrative and building services systems.**

Whether it's an emergency response system or a family trying to navigate their way around with wayfinding signage – all processes and systems will be subject to rigorous testing. Once complete, the new hospital will be **fully operational from November 2021.**

We also look forward to **the announcement of our children's health service new name** in the next few weeks, which is an exciting milestone on the journey to our new hospital.

Nuts and Bolts

With framing and lining of rooms well underway we are excited to see the final layout of clinical, patient, whānau and public spaces start to emerge. Installation of the main utilities and services continues. Stairs, lift shafts and all the vertical risers are progressing and work has also begun on the adjoining services annex.

Ground works for construction of the **47metre** long bridge linking the new children's hospital with the main campus is also underway. This is a sophisticated piece of engineering work as it connects two buildings with different seismic sways.



Children's Health Champion **Mark Dunajtschik honoured** with prestigious Community Service Awards

On 10 July 2017, Mark Dunajtschik announced that he would commit an extraordinary \$50 million to build and donate a new purpose built children's hospital for children and young people throughout the greater Wellington Region. Regional Rotary and Lions clubs are key supporters of the Foundation's fundraising programme to outfit and equip the interior of the new children's hospital, and we were thrilled to join Mark as he was presented with prestigious community service awards from these organisations.

The Paul Harris Fellow Award is named after Rotary International's founder and recognises a substantial contribution to humanitarian and educational programmes; and the Lloyd Morgan Lions Clubs Charitable Trust Award acknowledges outstanding services to the community. These honours recognise Mark's remarkable legacy gift to our region's young people.

Mark Dunajtschik, John Mohi - Rotary District 9940 Past Governor & Mark's life partner Dorothy Spotswood.



Dorothy Spotswood, Mark Dunajtschik & Murray Pringle - Lions 202M District Governor.



Tamsin (Dancer, Horse Lover and Wellington Children's Hospital Cancer Patient)

A cancer diagnosis is something no parent ever wants to hear. For 9 year old Tamsin the diagnosis of leukaemia came like a bolt out of the blue and meant a whirlwind of tests, scans and long term treatment. Tamsin's Mum Hayleigh told us, "Tamsin's journey with Wellington Children's Hospital started when she was suddenly diagnosed with leukaemia. It is something you never imagine you will hear, and at such a terrifying time we were extremely grateful for the hospital and the team right from the moment we arrived." Despite what many of the gorgeous smiling pics of Tamsin suggest, having cancer is scary, it can hurt, and it takes an incredible physical and emotional toll on children and their families. Tamsin's journey isn't a quick one and she will be receiving treatment through until June 2021 in Wellington Children's Hospital. Her Nana, Cathy, told us, "It's a grandparent's worst nightmare - the 28th of March 2019 was the hardest day of our lives. Our precious seven year old granddaughter has cancer. It's so hard having to watch your daughter sooo upset it physically hurt - her having to tell her daughter she is so sick. We do believe everything happens for



a reason and if part of that was seeing how these Children's Hospitals work then it has certainly been an eye opener. Wellington Children's Hospital is filled with amazing staff and such a safe place to come to carry on Tamsin's treatment. It is hard to describe what the hospital feels like but after a difficult day either of treatment or a "sleep" (going into theatre for treatment) it feels comfortable and reassuring to go back to the ward. We would never have known what it feels like to be so vulnerable and reliant on medical staff and the wonderful team that have worked to put Tamsin on the road to recovery."

Tamsin kindly agreed to share her story, telling us that "If it helps people, that makes me happy." Hayleigh also noted that, "We had always donated whenever we could, never knowing how much of a huge role the children's hospital would play in our lives." Our thanks and best wishes go to Tamsin and her family.



Tamsin and her family - 3 weeks before her devastating diagnosis



Tamsin and her Nana, Cathy



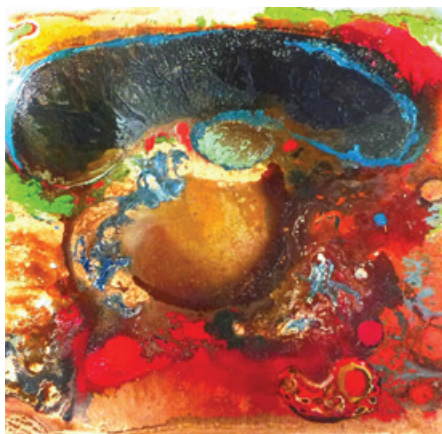
Inkless Print Kits for Bereaved Parents

As a result of your donations we were very pleased to be able to provide Inkless Print Kits to support families through the loss of a much loved and wished for child. Being able to preserve the hand and foot prints of these little ones is especially important for grieving parents, with your support helping to provide a little comfort during a difficult and distressing time.



Shane Hammond *Pacific Pāua, Pearl Wisdom*

We were thrilled to be gifted this large original Shane Hammond artwork which brightens up Wellington Regional Hospital's public atrium space.



Other items we have been able to fund because of your generosity

- A supply of wool for volunteer knitters thanks to grants from The Southern Trust and Four Winds Foundation
- A variety of items including radios, headphones and clocks; for dementia patients in the Older Adult and Rehabilitation ward at Kenepuru Hospital
- Continuation of an annual budget to fund toys and craft resources for our hospital's Play Specialists
- Continuation of annual funding of three aquariums in areas providing child health services
- Continuation of Health TV for the Emergency Department as well as the Accident & Medical Clinic at Kenepuru Hospital
- Buzzy Bee Devices and Distraction Kits for use in the Emergency Department Pink Zone, helping to distract young patients during unpleasant or scary procedures
- Massimo Rad 8 Pulse Oximeters for Child Health
- Supply of portable DVD players & TV's – Child Health & Emergency Department

Volunteers and donors doing amazing things

St Catherine's College ran a "Share the Warmth" campaign where students brought in warm clothes and blankets for families in need, and as a part of that initiative every week about 40 students would meet and knit peggy-squares to make beautiful blankets and baby beanies. Thanks team!



Clever college kids support our hospitals

Ava and Olivia donate activity sets for sick kids

It was lovely to receive this very special donation from Ava and Olivia. The girls are Senior Patrols for Girl Guides and as a part of their community badge programme decided to produce activity sets for children spending long hours in the children's hospital. We are constantly amazed by the generosity and thoughtfulness of children helping those less fortunate than themselves.



Ava and Olivia donate wonderful activity packs for sick kids

Donations to the children's hospital distract sick kids from painful procedures



Emma Cameron (Right), gifts Scentsy Buddies to sick kids

Thanks to everyone who kindly sponsored one of Lucy Cameron's lovable Scentsy Buddies during their annual promotion. Thanks also to Dan Mulholland and Fairy Bricks for their donation of LEGO activity packs. Play is an important part of the healing process and can provide a great deal of comfort to sick children. Both these gifts are used as distraction therapy by our Play Specialists to help distract children during scary and unpleasant procedures.



A note from Bill Day ...our wonderful Hospital Staff

Kia Ora

What a year it has been. I do hope you and your loved ones have fared well during the COVID19 lockdowns. Here at our hospitals I have witnessed the most amazing teams of medical staff work through very difficult and scary times. I cannot speak more highly of all our medical teams who went into the COVID journey not really knowing what to expect. We all do truly live in paradise.

Many of our supporters continued to support the Foundation during this time, and for the future of our patients both young and old. Thank you most sincerely. Our biggest project, your New Children's Hospital, has continued with only minor delays. This is a credit to our builders McKee Fehl, Mark and Dorothy and property manager Grant Corleison. You will see throughout this newsletter updates about Children's Hospital and other projects we have been able to fund through your support. I am also delighted to tell you that our hospital volunteers are back on the job after a break during Alert Level Two.

You will hear often from us over the next year even if it just a quick phone call to say thank you for your support or updates by email and other newsletters. If you need any information please look to our website or send an email, as always we would love to hear from you.

With much aroha from me and the Foundation team who all continue to do a great job,

Kindest regards and thank you



Bill Day MNZM, JP
Chair, Wellington Hospitals Foundation

“The reason we have chosen to remain a Wellington Children's Hospital supporter is threefold:

Firstly, when our own daughter was under three, sick with a vomiting bug, they looked after her and helped us through this very hard time for a young family. They also helped us when our elder daughter got concussion from a sports injury.

Secondly, we have had lots of friends and acquaintances who have had various issues with children's illnesses, or worse, and we have seen how grateful they are with all of the support they get from the hospital and staff.

Lastly, it is a great thing that the hospital does and they are needed into the future to always be there for parents and children who need the right, the best and the most caring support possible - at a time that is really tough, when a loved child is sick.

As long as we are able, we will continue to support the hospital. ”

Phil Coyle – Regular Giver

Thank you!

Your support makes a huge difference

to thousands of patients and their families every year

We are very pleased to share some of the other equipment, environment enhancing resources and wonderful care items that your donations have made possible across our hospitals.

Obstetric mannequin helps prevent injury during childbirth

Recent international research has demonstrated that refinements in practical birthing techniques can prevent injuries and result in better outcomes for both mothers and babies. The 'Sophie' mannequin is the only realistic mother / baby training mannequin that is specifically intended to allow obstetricians, registrars and midwives to practice and refine techniques that reduce women suffering from traumatic and painful birthing injuries and that are also safer for the baby. Sophie is a new-born baby weighing 3.2 kg and she contains a fully articulated metal skeleton that behaves as a human skeleton does. Sophie's Mum has a full pelvis, the joints of which are slightly loosened to simulate the movement in those joints during childbirth. This donation to the Wellington Hospital's Women's Health team was made possible by the generosity of our supporters and RG Bell Charitable Trust.



Multi Gym helps patients get back on their feet more quickly

With New Zealand Community Trust's help we were very pleased to be able to co-fund a multi-gym for Wellington Hospital's Therapies Outpatient team. The department treats thousands of patients every year who have either a physical injury or disability, or who are trying to get back on their feet after surgery. Having access to good rehabilitation and physiotherapy support is a key part of their recovery process. Using the multi-gym under the careful eye of a physio, helps patients to confidently and safely transition to community gyms where they can continue their strengthening, stabilising and balance training.



Uncertain times
means most events and
fundraisers move online

Wellington Regional Children's Hospital Annual Street Appeal



Sadly we were unable to proceed with our Annual Street Appeal this year. Huge thanks to everyone who donated to our virtual appeal instead.

Hospi's Jammies in June

Warmest thanks to all the kind kids, community groups, families and businesses who either gifted a warm pair of cosy pyjamas or donated money to Hospi's Virtual Jammies in June appeal.

These donations made a significant difference to many sick kids this winter. Not only did your generosity allow us to provide pyjamas for children admitted in an emergency situation, but also to kids who in the course of their stay were extremely unwell and greatly appreciated the comfort of clean fresh pyjamas. Our community nursing teams have also distributed hundreds of pyjamas to vulnerable children in homes that are often cold and damp, helping to prevent complications from asthma and other nasty respiratory infections. Thanks again for all your wonderful support.

*Wellington Children's
Hospital patient Aayush
with hospital mascot, Hospi*



**You can help
your hospitals
help you**



- Become a Well Wisher (Regular Giver) for an area in your hospital that means something special to you. To find out more or sign up, email: **donations@whf.org.nz**
- Make a one-off donation online at **whf.org.nz/donate**
- Leave a Bequest. Make an important contribution in the future, without affecting your current circumstances. Email: **admin@whf.org.nz** to find out more.
- Volunteer at one of Wellington's Hospitals. For more information, visit **whf.org.nz/volunteer**, or email: **volunteer@whf.org.nz**
- Hold a fundraiser to raise money for an area in the hospital of your choice. Visit **whf.org.nz/fundraise** for ideas!
- Become a Charity Partner and collaborate with us in support of your hospitals. Email: **admin@whf.org.nz** to find out more.
- Did you know that you can claim a tax refund of up to 33% for your donation? For more information or to make a claim, head to IRD's website: **www.ird.govt.nz**



**DONATION
TAX
REFUND**

Thank you to all our Charity Partners and Major Supporters:

- Buddle Findlay Child Health Foundation ■ Capital City Motors ■ Child's Play Charity ■ Countdown Kids Hospital Appeal
- Mark Dunajtschik and Dorothy Spotswood ■ DLA Piper ■ Four Winds Foundation ■ Infinity Foundation ■ Jack Jeffs Charitable Trust ■ Lions International District 202M ■ Lottery Grants Board ■ Macaulay Metals ■ Margaret Neave Charitable Trust ■ Moore Wilson's ■ Munro Benge ■ New Zealand Community Trust ■ Noel Leeming ■ One Foundation ■ Pelorus Trust ■ Perpetual Guardian ■ Pub Charity Ltd ■ Recycling For Charity ■ R G Bell Charitable Trust ■ Rotary District 9940 ■ The Kingdom Foundation ■ The Lion Foundation ■ The Southern Trust ■ The Sutherland Self Help Trust ■ TG Macarthy Trust ■ Trust House Foundation ■ Wellington Community Trust ■ Wellington Rugby Football Union ■ Weta Workshop ■ Winton & Margaret Bear Charitable Trust ■ Westpac ■ World Marudao Karate ■ and all our supporters

P (04) 806 2332 **E** admin@whf.org.nz **W** whf.org.nz **M** Private Bag 7902, Wellington 6242
www.facebook.com/wellingtonhospitalsfoundation

Wellington
HOSPITALS
FOUNDATION