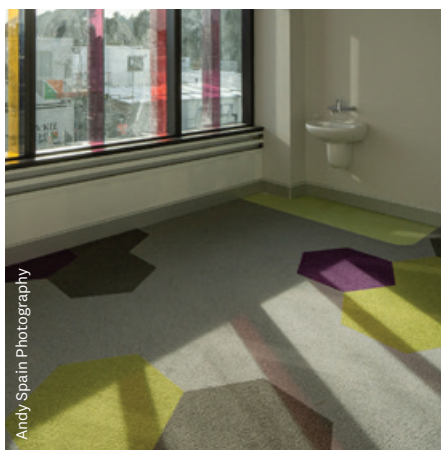


Te Wao Nui Child Health Service and Hospital In the Mark Dunajtschik and Dorothy Spotswood Building.

The most significant donation supporting children's healthcare in Australasia for many years.

Designing, building and equipping the new regional Te Wao Nui Child Health Service and Hospital, in the Mark Dunajtschik and Dorothy Spotswood Building; has been an incredibly exciting journey to be part of, and we are very pleased to bring you this latest update.

Whether it's your child or the child of someone you know, our paediatric doctors and nurses are there for our region's youngest and most vulnerable patients so that they can get kids back to living the childhoods they deserve. But they don't do it alone. When you support Wellington Hospitals Foundation you are supporting patients, their families and excellence in healthcare.



Construction Update

Building work resumed quickly at Level three following each of the COVID19 national lockdowns in March 2020 and late August 2021, and it is an enormous credit to Mark Dunajtschik and the McKee Fehl team that despite these interruptions and supply chain delays, there have been only relatively minor delays to the overall building programme. All works are scheduled to be completed by February and, once rigorous commission testing of all services has been completed, the building will be **open to patients and families in Autumn 2022**.

Work on the interior of the new children's hospital is progressing well and it's exciting to see the final spaces taking shape. Internal lining of rooms is largely complete in some areas, with carpeting, vinyl and wall finishes beginning to go in.

Seismic bracing of services is being done in the plant room and retaining works for landscaping and car parking around the site is also progressing well.

Work on the internal medical gas systems is underway and service connections into the regional hospital have been completed, with IT fibre connections, pneumatic tube system to the labs, and fire connection cabling installed. This hi-tech and fit for purpose new hospital includes more than **22,000km of electrical wiring** – which is the equivalent of flying from NZ to South Africa and back again.



Fixed joinery such as cupboards and reception desks are largely in place across two levels, and lift installation is also nearly complete. Work continues by the project team to select much needed new medical and therapeutic equipment, and requests for quotes have been issued to suppliers for general furnishings. Family friendly wayfinding signage with kaitiaki character theming, has been created and tested with key groups.

Work is also underway to create a donor wall that acknowledges Mark Dunajtschik and Dorothy Spotswood along with the thousands of caring community donors from across our region.



→ The next major milestone will be breakthrough of the **Link Bridge** that connects the new building to the main hospital campus. This is a complex piece of engineering that will connect two buildings with different seismic sways. The prefabricated glass panels used in the Link Bridge were recycled from the BNZ building by Wellington Port, which was deconstructed following the Kaikoura earthquake. The reuse of existing and suitable building material in this way aligns with McKee Fehl's sustainability goals and objectives for waste minimisation.



Installation of the **Tree of Life** and spiral staircase connecting levels 2 and 3 also continues. This will be an iconic structure and a central part of the interior theming. The Tree of Life connects to the playful and fun murals created by Weta Workshop that reflect the different layers of the forest ecosystem – forest floor, tree line and canopy. It is creative elements like these that will bring Te Wao Nui to life. Work is also underway to develop new Kaitiaki themed merchandise which will support roll out of the new Te Wao Nui branding.

In August, along with our wonderful benefactors Mark Dunajtschik and Dorothy Spotswood as well as representatives from the CCDHB leadership and nursing teams, we were



thrilled to host the Governor General Dame Patsy Reddy through the new children's Hospital. Her Excellency has taken a keen interest in construction of the new hospital and it was a lovely opportunity to show her around the build as she comes to the end of her term as Governor General.

“This will be such a wonderful new paediatric hospital for the children and young people in our region.”

Dame Patsy Reddy



Dame Patsy Reddy, Mark Dunajtschik, Bill Day, Chair WHF and John Tait, Chief Medical Officer 2DHBs

Transition Team Project Update

“The project team has confirmed the new Models of Care and Principles for incoming services to Te Wao Nui. The team is now focussing on the training and orientation strategy as well as move planning, with a comprehensive training plan developed to support staff transitioning to their new work environment. We are in the final stages of selecting all clinical equipment and furnishings for the build. It is an exciting time for the Child Health Service, after years of planning it is all coming together to provide a fabulous environment and service for our tamariki, rangatahi and whānau.”

Charlotte Stanczuk, Senior Project Officer, New Children's Hospital Transition Project Team

We wish to thank the many thousands of supporters helping to outfit and equip the interior of Te Wao Nui – your New Regional Children's Hospital. To support the build please donate at whf.org.nz/donate



A message from the chair

My Trustees, Foundation staff and I sincerely hope you and your family members are well at this difficult time of COVID19 and our lockdowns. Please stay safe.

I am pleased to tell you that our Foundation staff have been very successfully working from home but they are very keen to get back into the office. And our volunteers are now back helping our many hospital visitors across many hospital areas.

COVID19

I would like on your behalf, to extend our gratitude to all our doctors, nurses and hospital staff for the outstanding work they have been doing and continue to do for our patients at this seemingly ongoing anxious time. I continue to be amazed at their commitment and dedication. They are all just fantastic. Prior to COVID19 Alert Level 3 our children's wards were affected with RSV which impacted many young children and babies. Again our staff excelled themselves.

Fundraising

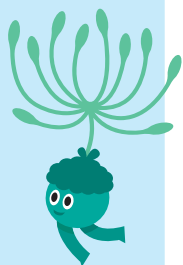
Thank you to all our donors who continue to support our fundraising programmes to make our hospitals just that bit better. We are getting closer to our goal of raising \$10million towards the fit-out and provision of medical equipment for our new Regional Children's Hospital. If you have made a donation already – thank you. If you wish to donate please visit whf.org.nz – we would love to add you to our growing list of donors.

There are many other areas within our hospitals where your donation can make a significant difference. As a registered Charitable Trust, we ensure your funds are spent in the areas that you wish, and all donations are tax deductible. It may be that you would like to talk to us about becoming a



A message from the chair

CONTINUED



Regular Giver or leaving a gift in your Will. If you would like to know more please contact the Foundation and we will discuss the best options for you to recognise your wishes.

In this newsletter you will read again about the progress of our New Regional Children's Hospital. It has been a wonderful journey led by our wonderful benefactors Mark Dunajtschik and his partner Dorothy Spotswood. They have been so generous. Together with Mark and Dorothy's contribution of \$50million PLUS the community's donations through Wellington Hospitals Foundation of \$10million (almost there) the community's support of our new hospital will exceed 60%. This is amazing and mirrors the community support of New Zealand/Aotearoa's very first hospital here in Wellington which was built with significant community support in 1912 and not long before the outbreak of the Spanish Flu in 1918.

As we look towards summer and Christmas please look after yourselves and your family members in the knowledge that you can make a large impact by supporting the Foundation and our hospitals. Places we hope you never have to use, but if you do you will know that our hospital staff are working hard for you and your family.

Thank you.

Bill Day, MNZM, JP
Chair, Wellington Hospitals
Foundation



Our community makes a difference...

Wellington Hospitals Foundation has amazing dedicated partners and donors from across our region that have come together to generously support our many and varied fundraising campaigns.

Whether it's a corporate grant or a child's pocket money, donations to the new hospital go towards the \$10 million needed to outfit and equip the interior of this stunning new building. This includes all the furniture and fittings, as well as medical and therapeutic equipment, along with all the IT and creative elements of this exciting and much needed new facility.

We're thrilled to announce that **Lions International** clubs throughout our region have raised \$500,000 for the new hospital Playscape. This outdoor play area will also serve as an additional therapeutic space for our Child Development and Physiotherapy teams, with specially designed rehabilitative equipment enhancing therapy programmes for children with mobility issues. This is a mammoth fundraising effort!



T G Macarthy Trust have kindly donated a grant towards the inpatient tiltaway beds for parents/caregivers to stay overnight with their sick children. In 1912 Mr T G Macarthy was one of the original community supporters of New Zealand's first purpose built children's hospital here in Wellington. In 1910, a major fundraising campaign was launched by the Mayoress Mrs T M Wilford to raise funds for the new hospital. Thanks largely to the support and enthusiasm of Thomas George Macarthy, Lord Islington, Hugh Ward and the Mayoress, the appeal was such a huge success that surplus funds were

raised over and above what was required to build the new hospital. On 13 March 1912 the 'King Edward VII Memorial Hospital for Children' was opened in Wellington, making it New Zealand's first ever Children's Hospital. In recognition of their support, the four Wards were named Macarthy Ward, Islington Ward, Wilford Ward and Ward Ward. From the surplus funds, 18 Royal Doulton mural tiles were purchased which have been a special part of the Children's Hospital for almost 110 years. Wellington Hospitals Foundation thanks T G Macarthy Trust for their incredible legacy of support for Child Health.



World Marudao Karate is one of the Foundation's longstanding charity partners, and have raised and donated an extraordinary \$107,000 to Child Health projects from their Annual Quiz Nights. This year they raised \$18,000 which will be put towards much needed EEG monitoring equipment for Wellington Hospital's Paediatric Neurology service, which will help in the diagnosis of brain disorders in children and young people.





Grateful thanks to the **Sutherland Self Help Trust** for their support which has enabled us to buy six paediatric wheelchairs and two weighted hoists for the New Children's Hospital. The hoists will assist staff to safely and easily lift and transfer patients with limited or no mobility.

New Zealand Community Trust, Four Winds Foundation and The Kingdom Foundation have all generously allocated grants towards equipment for the hospital's two new Therapeutic Gyms in the new Wellington Regional Children's Hospital. These gyms will be used by both the Child Development Service and the Paediatric Rehabilitation Service teams to provide therapy and rehabilitation for young patients aged from birth to 16 years. Children who pass through these services are treated for both short term, long term and permanent disabling conditions and require a range of different therapeutic interventions which involve the use of a wide range of therapy equipment.



Rotary District 9940 is raising \$400,000 for the two whānau spaces in the new hospital. These will be essential breakaway areas for families and will include lounge, dining, play and kitchen facilities. Laundry facilities will also be available in other areas of the hospital. Our grateful thanks to everyone involved.



Special thanks must also go to other grant providers who have supported us by funding essential medical and therapeutic equipment for this wonderful new facility.

- **Pelorus Trust** – IV poles with character feet
- **Nikau Foundation** – general equipment fund
- **Jack Jeffs Charitable Trust** – general equipment fund
- **Perpetual Guardian** – general equipment fund
- **The Lion Foundation** – tiltaway beds for parents/caregivers to stay overnight with their sick children

Support for other areas of our hospitals

As always it is a privilege to represent our donors within the hospitals we serve. The stretched health dollar only goes so far and your generosity enables our medical teams to provide the best possible care and treatment for your nearest and dearest when faced with serious health events.

Thanks to you, in recent months we have also been able to continue our support in other areas of our hospitals.

Foundation donors have funded four televisions on purpose built trolleys for Wellington Regional Hospital's **Emergency Department** for use by paediatric patients while they are waiting to be seen. Community support has also enabled us to install three mobile charging stations in the ED waiting area, as well as supplies of emergency clothing for those in need.



Funding has also enabled us to provide artwork for the hospital's **Child & Adolescent Mental Health Service and the Eye Clinic**, making the spaces much more welcoming and inviting for patients, visitors and staff.

We were delighted to be able to present the hospital's **Neonatal Intensive Care Unit** with 10 infant car seats for families in need to take their precious wee babies home after their stay in NICU. Access to these car seats will make a huge difference for many of our whānau.

With your help, the Foundation has also been able to provide a range of specialty equipment for paediatric **Audiology** patients at both Wellington and Kenepuru hospitals. This includes Assistance Learning devices, custom swim plugs and pilot caps.



NICU Assoc. Charge Nurse Manager Deb Davenport

We are also very pleased to have been able to supply resource books to the **Palliative Care/ ORA Social Work / Blood & Cancer Centre / and Community Oncology teams** for children whose parents have been diagnosed with cancer and other long term health conditions. These resources have proved invaluable, particularly for tamariki under the age of 12 years who do not have easy access to supportive materials and services when difficult events happen in their lives.

The Foundation thank Sensortronic Weighing & Installation Australasia for their generous grant which enabled the purchase of two chair scales and a platform wheelchair scale for Wellington Regional Hospital's **Ward 6 South**.



Community Fundraisers

Warmest thanks to all Jammies in June donors

This winter there was a national outbreak of the highly contagious and severe respiratory illness Respiratory Syncytial Virus (RSV), with many babies and young children requiring admission to hospital. We were overwhelmed by the generosity of our community's response to our Jammies in June Appeal, with gifts of more than 2,600 PJs and over \$16,300 in donations from across our region, allowing us to buy pyjamas on your behalf. Many of you posted or dropped in anonymous gifts, many of you rallied workmates, community groups or school friends to donate... HUGE THANKS to you all for helping to keep sick kids warm this winter.

Bree and Piper have both been frequent flyers to Wellington Children's Hospital. With a couple of unexpected overnight admissions over the years, both girls were grateful to receive a pair of fresh clean PJs and wanted to pay this kindness forward with a huge donation of pyjamas. Wellington Children's Hospital holds a special place in this family's heart. 11 year old Bree has a chromosome deficit that causes multiple serious and life impacting health problems, and Mum and Dad Justine and Tony of Precision Concrete Pumping and Spraying, played an important part in pouring the foundations of the New Children's Hospital.



Piper and Bree pay the kindness forward

We are incredibly fortunate to have many individuals, community groups and other organisations raising funds or donating much needed items to our hospitals. While it's impossible to recognise them all here, follow us on Facebook [@wellingtonhospitalsfoundation](https://www.facebook.com/wellingtonhospitalsfoundation) to find out more.

The Greek Ladies Auxiliary Association of Wellington raise \$8,000 for the new children's hospital from a High Tea fundraiser.



Organiser-extraordinaire Melpo Kaledlis



Bill and Sue Day enjoy High Tea.

Early Learning resource books for our Child Health teams donated in a joint project with Port Nicholson, Wellington, Wellington North, Mt Victoria and Porirua Rotary Clubs.

Joy Durrant, Rotary



Thank you all



Whittaker's Chocolate donate a sweet treat to the hardworking teams of essential healthcare workers across Wellington and Kenepuru Hospitals during COVID19 Alert Level 3.



Lovely long locks loped! Hamish and Lucia both set up Givealittle fundraisers for a sponsored chop.



The gift of a lifetime

After remembering loved ones in their Wills, many people want to leave something to help make a difference. Leaving a legacy to Wellington Hospitals Foundation is a lasting gift that will ensure our hospitals can continue to provide world-class treatment and care today, tomorrow and forever. Every gift, no matter how big or small, has a significant impact on the lives of our hospitals' patients and their families. Email admin@whf.org.nz to find out more.



Thank you to all our volunteers

“Our volunteers continue to do amazing and inspiring work and I thank them for their commitment and dedication to our hospitals.”

Bill Day, Chair, WHF

We are very fortunate to have teams of hard-working volunteers who kindly choose to gift their time to help our hospitals. Over the past 18 months our volunteers have all shown great resilience as we've cycled in and out of changing COVID19 alert levels, and we are very grateful that they've remained on board and are ready to go each time work has been able to resume. And grateful thanks to all the knitters/sewers/quilters who continue to create the most wonderful items for our hospitals while in lockdown.

Community COVID19 Clinic Volunteers



We are very pleased to be able to assist our hospitals with the Government roll out of community based COVID19 vaccination clinics. Volunteers are being recruited from across the greater Wellington area. These volunteers will be crucial in providing support to people who require a little more assistance when getting their vaccination. Despite the horrendous weather, it was great to have such a large turnout for our first orientation programme. If you are interested and can spare 3-4 hours, Monday to Friday on a weekly basis, we would love to hear from you. Contact Sally.Barton@whf.org.nz



Volunteers brave stormy weather to attend the first COVID Community Clinic Orientation

It is reassuring to know that our hospitals are here for us when we need them most and we are honoured to offer a way for families who may have experienced exceptional care from our hospital teams, to express their gratitude. To support all areas of your hospitals please donate at whf.org.nz/donate



Recycling For Charity can help you safely and sustainably dispose of your old phones, with proceeds helping to outfit and equip your new children's hospital.

Drop off zones are located in the foyer of Wellington Regional Hospital, Kenepuru Hospital, Kapiti Health Centre, or by contacting them directly. You can also check out their new dedicated E-Waste Stations at Otaihanga, Waikanae and Otaki Landfill Transfer Stations.



Capital City Motors
Serving the Wellington region since 1923

Special thanks to Capital City Motors who continue to provide generous sponsorship of the Foundation's cars.

When you support Wellington Hospitals Foundation you are supporting excellence in healthcare



- Become a Well Wisher (Regular Giver) for an area in your hospital that means something special to you. To find out more or sign up, email: donations@whf.org.nz
- Make a one-off donation online at whf.org.nz/donate
- Leave a Bequest. Make an important contribution in the future, without affecting your current circumstances. Email: admin@whf.org.nz to find out more.
- Volunteer at one of Wellington's Hospitals. For more information, visit whf.org.nz/volunteer, or email: volunteer@whf.org.nz
- Hold a fundraiser to raise money for an area in the hospital of your choice. Visit whf.org.nz/fundraise for ideas!
- Become a Charity Partner and collaborate with us in support of your hospitals. Email: admin@whf.org.nz to find out more.



Did you know that you can claim a tax refund of up to 33% for your donation? For more information or to make a claim, head to IRD's website:

www.ird.govt.nz

**DONATION
TAX
REFUND**

Thank you to all our Charity Partners and Major Supporters:

■ Bell Gully ■ Buddle Findlay Child Health Foundation ■ Busy Bee Quilt Shop ■ Capital City Motors ■ Child's Play Charity ■ Countdown ■ David and Tracey Platt ■ DLA Piper ■ Douglas James Catley Foundation ■ Four Winds Foundation ■ Infinity Foundation ■ Jack Jeffs Charitable Trust ■ Lions International District 202M ■ Lottery Grants Board ■ Macaulay Metals ■ Mark Dunajtschik and Dorothy Spotswood ■ Margaret Neave Charitable Trust ■ Moore Wilson's ■ Munro Bengé ■ New Zealand Community Trust ■ Noel Leeming Group ■ One Foundation ■ Pelorus Trust ■ Perpetual Guardian ■ Pub Charity Ltd ■ PWC Foundation ■ Recycling For Charity ■ R G Bell Charitable Trust ■ Rotary District 9940 ■ Sensortronic Weighing & Installation Australasia ■ The Kingdom Foundation ■ The Lion Foundation ■ The Southern Trust ■ The Sutherland Self Help Trust ■ TG Macarthy Trust ■ Trust House Foundation ■ Wellington Community Trust ■ Wellington Rugby Football Union ■ Westpac ■ Weta Workshop ■ Winton & Margaret Bear Charitable Trust ■ Wildscape Landscape Construction ■ World Marudao Karate ■ and all our supporters

P (04) 806 2332 E admin@whf.org.nz W whf.org.nz M Private Bag 7902, Wellington 6242
www.facebook.com/wellingtonhospitalsfoundation

**Wellington
HOSPITALS
FOUNDATION**