

Te Wao Nui Opens to its first patients

Thank you to everyone who has played a part in creating this exceptional new regional children's hospital.

In the last 16 years the Foundation has raised many millions of dollars for medical equipment and other items for Wellington's hospitals, and in that time there were frequent discussions about the desperately poor shape of the existing children's hospital.

With no immediate government funding available to repair and renovate the building, in 2016 Bill Day Chair of Wellington Hospitals Foundation, approached longtime friends Mark Dunajtschik and Dorothy Spotswood for help. In 2017 Mark and Dorothy announced that not only would they donate \$50 million (later increased to \$53 million) for a new regional children's hospital, but that they would also

undertake to build it themselves. This is a unique philanthropic model and the greatest of legacies the likes of which New Zealand has not seen before.

The Government would commit a further \$46 million to the build (which included \$21 million for preparatory work on the site), the former Capital and Coast District Health Board contributed \$7 million and Wellington Hospitals Foundation would engage with the community to raise the remaining \$10 million to outfit and equip the interior.

Without Mark and Dorothy, together with over 11,000 community donors, a new children's hospital would have been many years away and sick children, their families and our hospital's medical

teams would have continued to struggle in a building that was broken and unfit for purpose.

From the beginning, Te Wao Nui's clinical and allied health staff were heavily involved in the design and build process and they have helped create a light, spacious and modern children's hospital that has clinical functionality and family needs at its heart. It is an enormous credit to many of those individuals that this was achieved alongside their day job of ensuring the highest level of ongoing care for our hospital's youngest patients. It has been an enormous workload.

Formal Opening Ceremonies

On **30 September 2022** we celebrated as Te Wao Nui Child Health Service, in the Mark Dunajtschik and Dorothy Spotswood Building, was formally opened.

It was an early start as the official ceremonies began with a moving Dawn Blessing of the new building by the Iwi-Maori Partnership Board and Mana Whenua. Local kaumātua and kuia led 170 staff, supporters and assembled guests throughout the new hospital. There was also an outstanding kapa haka performance from talented young rangatahi from Te Kura Kaupapa Maori O Ngā Mokopuna School.

Later, the Governor General, Dame Cindy Kiro and the Minister of Health Andrew Little, jointly opened Te Wao Nui



Mark Dunajtschik and Dorothy Spotswood celebrate the formal opening of the new hospital.





Local kaumātua and kuia.



Minister of Health Andrew Little, Her Excellency Dame Cindy Kiro, with Dorothy and Mark.



with Mark and Dorothy. Also in attendance was Deputy Prime Minister and Finance Minister Grant Robertson along with key donors and invited guests. All spoke of the significance of the new hospital and its vital role in our wider community and as part of the national tertiary hospital network.

It was also lovely to have two special young people, Tamsin and Markus, who are all too familiar with the children's hospital, join us on this special day.

Public Open Day

On **1 October 2022** we were delighted to open Te Wao Nui's doors to our community of supporters during the Public Open Day. It was wonderful to show so many of you through this stunning new building and to hear people's many recollections and stories of being treated or working in the old hospitals. Special thanks to Hiremaster and Metro Productions for their support of our opening events.

Now, for the very first time, a full range of paediatric services have been brought together under one roof. As well as inpatient medical and surgical wards, Te Wao Nui includes outpatient children's clinics and specialty services as well as Allied Health and Child Development Service clinics. This is a new child health model that makes it easier for families, and also allows for much easier collaboration across different specialties for children with multidisciplinary needs.

The medical ward will open in 2023 once Te Whatu Ora Capital, Coast and Hutt Valley have undertaken work on the air management and isolation systems following lessons learned from COVID.

“We have been so impressed by the exceptional care by all of the team at Wellington children's hospital and the confidence that we had in these professionals will now be reflected in the new, modern facilities of Te Wao Nui. I have seen Markus make some of his greatest progress when he was able to participate in play. The new environment of Te Wao Nui is child centered and reflects the importance of our tamariki being seen as child first before being a patient.” KARYN



“I am a fortnightly donor to the hospital and am so proud to support this charity. I was blown away after doing the tour at what an amazing facility Te Wao Nui is. It was a very emotional experience as I viewed the excellent standard that has been achieved. How lucky to have such a child and parent friendly hospital at our disposal should our kids and their kids ever need it. Respect and gratitude.” SONIA



“From the light spacious, private rooms that will support our patients' recovery, to the shared spaces and facilities to make it easier for whānau to stay while supporting their loved one – every detail is focused on how we deliver our services more effectively in a space that is welcoming and safe.”

JOHN TAIT, Interim Director Te Whatu Ora Capital, Coast and Hutt Valley district



The first patient arrives

18 October was a historic day as members of our hospital's Child Health Service team warmly welcomed the very first in-patient to Te Wao Nui. Ten year old Leyla was accompanied by her Mum Helen across the link bridge that connects the main hospital with Te Wao Nui, to where Tiaki (one of the new kaitiaki/guardians) was also there to greet them. Leyla suffers from cystic fibrosis and will be a frequent visitor to Te Wao Nui, and we wish her all the very best as she continues her treatment.



Leyla is shown to her room by clinical nurse specialist Charlotte Stanczuk, who was a part of the hospital's design and transition team.



Leyla checks out the view from her room of the Lions funded Playscape (unfinished).

Thank you to everyone who has played a part in creating this exceptional new regional children's hospital. We acknowledge and celebrate the incredible support of Mark, Dorothy and you, our community of donors, who have made this happen. The mauri/spirit of this children's hospital truly reflects the extraordinary generosity, aroha and goodwill of our caring community.

Into the Future

We continue to work closely with Te Whatu Ora Capital, Coast and Hutt Valley to ensure that Te Wao Nui is stocked with the most up to date medical equipment and technologies that we can afford. We will also continue to provide other resources, care and comfort items that are an integral part of a young person's journey to good health.

A message from the chair



30 September 2022 was a historic day. Wellington Hospitals Foundation trustees and staff were immensely proud to witness the Governor General, Her Excellency Dame Cindy Kiro and the Minister of Health Andrew Little, officially open our new regional children's hospital – Te Wao Nui, in the Mark Dunajtschik and Dorothy Spotswood Building.

As many of you will know, Mark and Dorothy built the new hospital and then donated it to our community. Mark and Dorothy's financial contribution totalled \$53million, which is a remarkable and profound gift to the people of this region. Mark made the initial announcement on 10 July 2017 and here we are 5 years later welcoming our first young patients to the new hospital.

Te Wao Nui's nurses, doctors and other allied health staff have been involved in the design and build process from day one, and have helped create a spacious and modern new hospital that has children at its very heart.

Wellington Hospitals Foundation has raised over \$10million to fit out and equip the new hospital. We are so grateful to our family of charity partners and the many, many individual donors who have seen the benefit of a new hospital for our tamariki and rangatahi. Funding Te Wao Nui with up to date medical equipment is ongoing and the Foundation welcomes and appreciates your continued support.

I also wish to thank our incredible team of 450 hospital volunteers for their support of our hospitals. They have shown great dedication and resiliency as we continue to work our way through the impact of COVID in our hospitals. Whether it's working remotely, or in the hospital itself, our hospitals are simply much better places because of our volunteers' generosity.

On behalf of us all at the Foundation I wish you and your whānau a very safe and special Christmas. And as we celebrate, let us remember those who are struggling with illness or injury, and those medical professionals and other hospital staff caring for them – many of whom will be working during our holiday break.

Bill Day, MNZM, JP
Chair, Wellington Hospitals Foundation



The Mark Dunajtschik Mental Health Centre

In another extraordinary act of generosity, in August Mark Dunajtschik announced a further \$50 million for a new mental health service. To be built on the Hutt Hospital campus this is another reflection of Mark Dunajtschik's desire to create better health services for the people of our region. This modern, purpose built facility will be a lifeline for the increasing numbers of adults facing a mental health crisis, and will provide a much better environment for those working on the frontline. Wellington Hospitals Foundation is pleased to be working alongside Te Whatu Ora Health NZ – Capital, Coast and Hutt Valley district as this project develops.

Our community makes a difference...

As always it is a privilege to partner with Te Whatu Ora Capital, Coast and Hutt Valley and to represent our donors within the hospitals we serve. The stretched health dollar only goes so far and your generosity enables our medical teams to provide the best possible care and treatment for your nearest and dearest when faced with serious health events.

Thanks to you, in recent months we have also been able to continue our support in other areas of our hospitals.

Simulation & Skills Centre

Thanks to a grant from **Pub Charity Ltd**, the Foundation has been able to place an order for a SimMan 3G Plus Human Patient Simulator (HPS) for the Simulation & Skills Centre at Wellington Regional Hospital. This highly advanced HPS will offer a fully immersive medical simulation experience for Emergency Care procedures. As it is custom made it will take several months to arrive from overseas and we look forward to providing additional details.



ICU nurses Kathryn & Lois

Donors help young ICU patients

The ICU can be an intense and very scary place for critically ill patients and their loved ones. Sadly, children are also regularly admitted to the ICU and last year during the RSV outbreak there were 9 tamariki and rangatahi in the unit at once. The unit has ceiling mounted TVs in 16 of the 24 bedspaces, however they didn't link to any children's channels and the positioning was also difficult for kids to view. Through the generosity of Foundation donors we were very pleased to fund two televisions on purpose-built stands along with a Disney+ subscription for paediatric and young adult patients in ICU.

New livery for Foundation cars

We are incredibly grateful to our Charity Partner **Capital City Motors**, Wellington region's leading Ford and Mazda dealer, who have generously sponsored the Wellington Hospitals Foundation cars for many years. It was exciting to see our new Mazda dressed in the new Te Wao Nui Child Health Service branding. capitalcitymotors.co.nz



Bill Day (WHF), Matthew Carman Chief Executive/Principal Dealer Capital City Motors, Shona Brunton (WHF).



Dennis, volunteer musician

New piano hits the right note

The therapeutic benefits of music have long been recognised and for many years patients, staff and visitors have been entertained by our team of volunteer musicians in the Wellington Hospital atrium. The old piano was causing a lot of treble and was strung out after being in daily use by our team of talented volunteer hospital pianists. Thanks to Angus Brow, the Foundation was able to purchase a magnificent new white Yamaha Baby Grand, so that our volunteer musicians can continue to create an environment that enhances the overall well-being of people working in and visiting the hospital.



Ruth Mangnall, Nurse Eye Clinic and Lyn Stewart, Charge Nurse Manager, Eye Clinic

Eye-catching artwork for the Eye Clinic

Patients, staff and visitors to Wellington Regional Hospital's Eye Clinic will no longer be surrounded by bare walls. Thanks to the Foundation's generous supporters we have funded a television for the main waiting area, as well as a number of new artworks. The striking black and white historical photographs of Wellington city, brighten and add interest to the formerly bare space.

With your help, the Foundation has also funded and sponsored:

- Health TV for Emergency Department & Kenepuru Hospital
- Manawa Ora Hospital Staff Orchestra
- Goodie bags for MHAIDS staff to acknowledge their amazing work during Mental Health Awareness Week
- Inkless kits for ICU and Palliative Care Service
- Sponsorship of NZNO College of Air and Surface Transport Nurses (COASTN) Flight Symposium

New imaging equipment for paediatric theatres

Thanks to the generosity of our community, the Foundation was recently able to purchase much needed diagnostic equipment for our hospital's paediatric surgical service. The new equipment improves the imaging capability of endoscopes used to investigate children with gastrointestinal problems. Unfortunately children can suffer from a variety of gut problems including inflammation of the oesophagus from acid or allergy, coeliac disease, inflammatory bowel disease (Crohn's and Colitis), gastrointestinal bleeding and intestinal polyps. Paediatric gastrointestinal endoscopy is an essential procedure for diagnosis, for monitoring the spread of disease and for therapy. Image: Consented for use with grateful thanks to the family and staff.



Community Fundraisers

We are incredibly fortunate to have many individuals, community groups and other organisations raising funds or donating much needed items to our hospitals. While it's impossible to recognise them all here, follow us on Facebook [@wellingtonhospitalsfoundation](https://www.facebook.com/wellingtonhospitalsfoundation) to find out more.

Eat, Drink, Play Festival Gala Ball

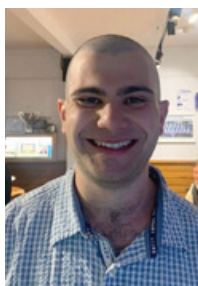
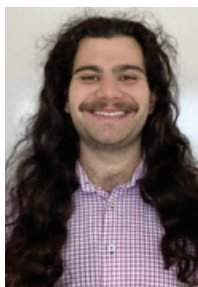
Wellington Hospitals Foundation, on behalf of the new regional children's hospital, was delighted to be selected as the charity of choice at the Celebrate Wellington Gala Ball, as part of the Eat Drink Play Festival in Wellington. Raising in excess of \$45,000, this was a spectacular evening - a fabulous fusion of fine wine, dining, high fashion, art and live entertainment, and was one of the largest hospitality events our city has seen for some time. Grateful thanks to Trinity Group Holdings and Hospitality NZ, as well as all the sponsors for organising such a stunning red carpet event.



MC Karen O'Leary

Long locks lopped

It was a freak accident that prompted Chris Kotrotsos to shave his very long locks in support of sick kids. When his six year old cousin Petra had a minor playground accident she was taken to hospital with a suspected broken rib, however instead of a fracture they found a cancerous tumour the size of an iPhone. After the discovery of six more tumours, many rounds of radiotherapy and chemotherapy, major surgeries and a spinal reconstruction, at 19 Petra was eventually diagnosed with a neurological disorder (Paraneoplastic Syndrome). As a result of the good care she received at Wellington Children's Hospital Chris wanted to raise money to support the service and has raised \$5,100 for a new medical grade drugs fridge.



Kind community outreach

Tasked with a Year 10 community project, Helena, Anika and Nicoletta (pictured left to right) from Queen Margaret College decided to fundraise to create beautiful and well thought out care packages, specifically designed for teenagers spending long hours in hospital. Each pack contained ear buds, cute fluffy socks and a book and were enthusiastically received by teens in the ward.



In the news

As New Zealand woke up to the sad news of Her Majesty Queen Elizabeth II's passing, we remembered and celebrated her incredible years of service.

We also recalled her visit to Wellington Children's Hospital in 1970 where she met with patients and members of staff in the former King Edward VII Memorial Hospital for Children.



As a long-time supporter of Wellington Regional Hospital's Neonatal Intensive Care Unit, we were thrilled at the news that our incredible NICU team had safely delivered the Wills family quads! It took a team of 10 special people to bring these precious pēpē into the world! Our warmest congratulations to all!



The gift of a lifetime

After remembering loved ones in their Wills, many people want to leave something to help make a difference. Leaving a bequest to Wellington Hospitals Foundation is a lasting gift that will ensure our hospitals can continue to provide world-class treatment and care today, tomorrow and forever. Every gift, no matter how big or small, has a significant impact on the lives of our hospitals' patients and their families. Email admin@whf.org.nz to find out more.

Thank you to all our volunteers

Our teams of hardworking volunteers continue to show great dedication and commitment through a difficult time as COVID19 has impacted our hospitals. Now restrictions are easing, we are rebuilding the teams and are very impressed with the quality of new volunteers joining the Foundation whānau.

Soggy Street Appeal

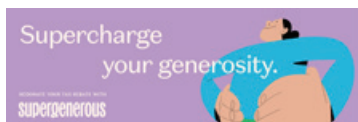
Huge thanks to all the wonderful volunteers who braved Wellington's wintry weather and turned out to collect for the children's hospital. After a two year absence due to COVID, it was great to have a presence on Wellington's streets again.



It is reassuring to know that our hospitals are here for us when we need them most and we are honoured to offer a way for families who may have experienced exceptional care from our hospital teams, to express their gratitude. To support all areas of your hospitals please donate at whf.org.nz/donate

Did you know that if you have donated to us in the past 4 years you may be eligible for a donation rebate of 33.33%. For more information or to make a claim, head to IRD's website: www.ird.govt.nz

Alternatively, we are pleased to be partnering with Supergenous to supercharge your kind gifts. The Supergenous online platform makes it super easy to claim your donation rebates back and they give you the option to regift your rebate back to us as a new donation. See more at <https://www.supergenous.co.nz/superpartners/wellington-hospitals-foundation>



Recycling For Charity can help you safely and sustainably dispose of your old phones, with proceeds helping to outfit and equip your new children's hospital. Drop off zones are located in the foyer of Wellington Regional Hospital, Kenepuru Hospital, Kapiti Health Centre, or by contacting them directly - recyclingforcharity.co.nz



When you support Wellington Hospitals Foundation you are supporting excellence in healthcare



- Become a Well Wisher (Regular Giver) for an area in your hospital that means something special to you. To find out more or sign up, email: donations@whf.org.nz



- Make a one-off donation online at whf.org.nz/donate
- Leave a Bequest. Make an important contribution in the future, without affecting your current circumstances. Email: admin@whf.org.nz to find out more.
- Volunteer at one of Wellington's Hospitals. For more information, visit whf.org.nz/volunteer, or email: volunteer@whf.org.nz
- Hold a fundraiser to raise money for an area in the hospital of your choice. Visit whf.org.nz/fundraise for ideas!
- Become a Charity Partner and collaborate with us in support of your hospitals. Email: Shona.Brunton@whf.org.nz to find out more.

Thank you to all our Charity Partners and Major Supporters

Our sincere thanks also to all our supporters who work with us to raise funds for the new children's hospital and to achieve our goals across other areas of our hospitals. This includes our many Regular Givers and the many caring kids, families, schools, community groups and other organisations who generously support the Foundation's work to provide resources, equipment and comfort items that are an integral part of a patient's journey to good health.

- Bakker Family Trust ■ Buddle Findlay Child Health Foundation ■ Busy Bee Quilt Shop ■ CAAT Management ■ Capital City Motors ■ Child's Play Charity ■ Countdown Kids Hospital Appeal ■ Datacom ■ David and Tracey Platt ■ Dileva Design ■ DLA Piper ■ Douglas James Catley Foundation ■ Four Winds Foundation ■ Grassroots Trust ■ Greek Ladies Auxilliary ■ Holistec Systems Ltd ■ Jack Jeffs Charitable Trust ■ Lions International Districts 202M, 202E and 202D ■ Lions Clubs International Foundation ■ Lloyd Morrison Foundation ■ Macaulay Metals ■ Macris Trust Estate ■ Mark Dunajtschik and Dorothy Spotswood ■ Marketing Impact ■ McKee Fehl ■ Moore Wilson's ■ Munro Bengie ■ New Zealand Community Trust ■ Noel Leeming Group ■ Nikau Foundation ■ NZME ■ One Foundation ■ Prestige Print ■ Pub Charity Ltd ■ PWC Foundation ■ Recycling For Charity ■ Rotary International District 9940 ■ Sky Network Television Ltd ■ Perpetual Guardian ■ The Lion Foundation ■ The Lloyd Morgan Charitable Trust ■ The Newman Family Trust ■ The Southern Trust ■ The Sutherland Self Help Trust ■ Tommy's Real Estate ■ TG Macarthy Trust ■ Trinity Group Holdings ■ Trust House Foundation ■ Vodafone New Zealand Ltd ■ Wellington Masonic Club Inc ■ Wellington Rugby Football Union/Wellington Lions ■ Westpac ■ Weta Workshop ■ Woolf Photography ■ World Marudào Karate Organisation ■ and all our supporters

P (04) 806 2332 **E** admin@whf.org.nz **W** whf.org.nz **M** Private Bag 7902, Wellington 6242
www.facebook.com/wellingtonhospitalsfoundation

